

翘板开关 (ROCKER SWITCH)

Specification:

Rating: 10(10)A 250VAC T85/55
15A 125VAC, 7.5A 250VAC

Function: on-off-on

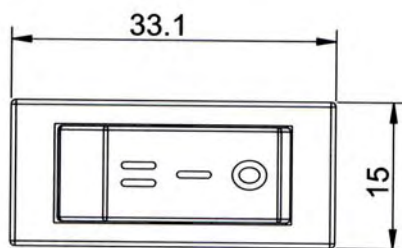
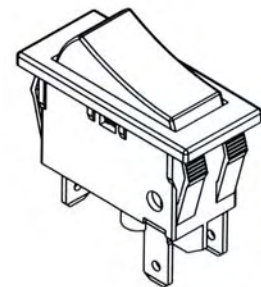
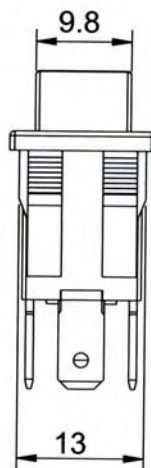
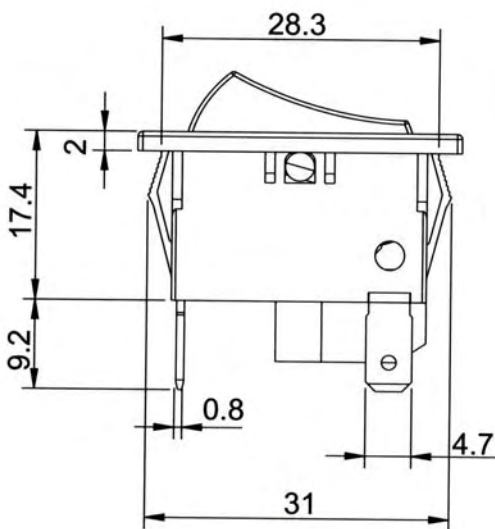
Operating Force: 6N

Connections: 4.7X0.8

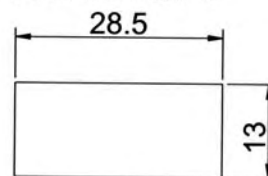
Approvals: CQC, UL, cUL, TUV

SINMAR

KAN-D2



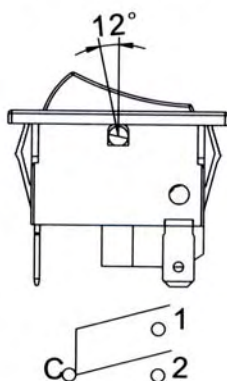
PANEL CUT OUT:



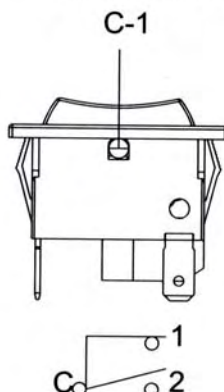
PLASTIC THICKNESS: 0.7-3.5.

CIRCUIT DIAGRAM:

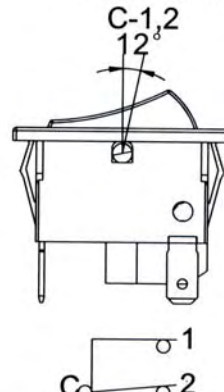
OFF POSITION



ON POSITION



ON POSITION



SINMAR

SHANGHAI SINMAR ELECTRONICS CO., LIMITED

Tel: +86-21-69105463 Fax: +86-21-69105413

HTTP://www.sinmar.com.cn

上海昕满电子有限公司

MSN: shineswitch@hotmail.com

E-mail: sales@sinmar.com.cn